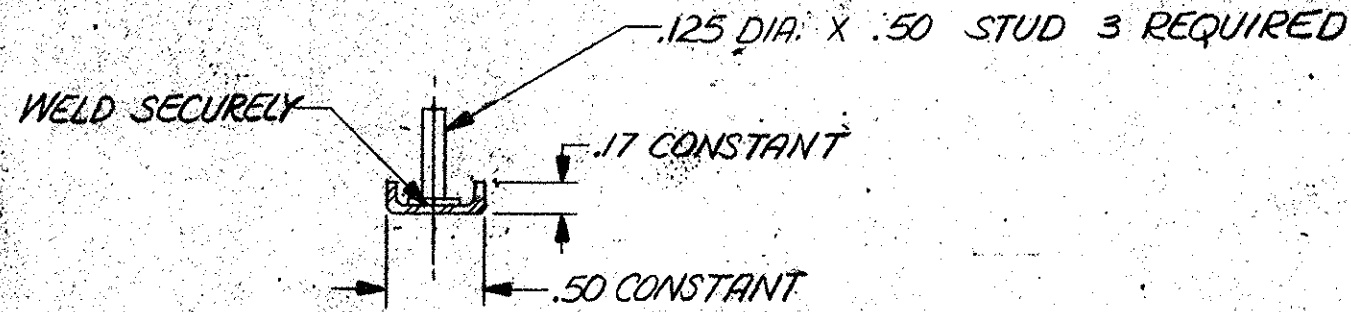


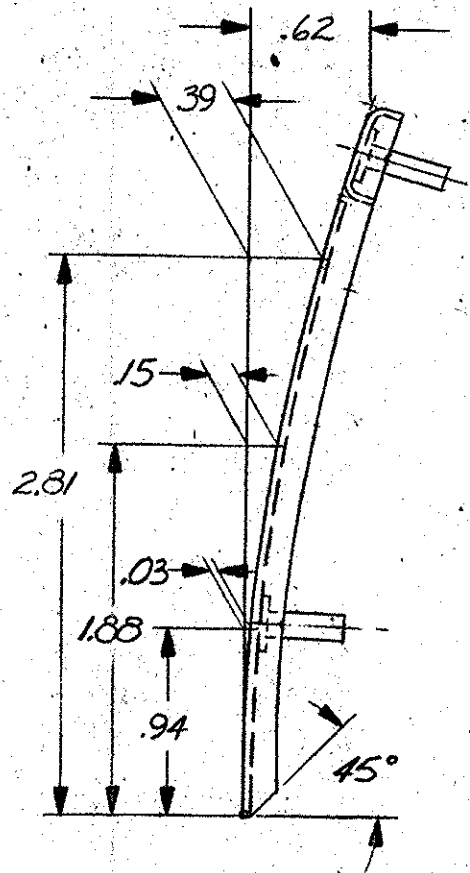
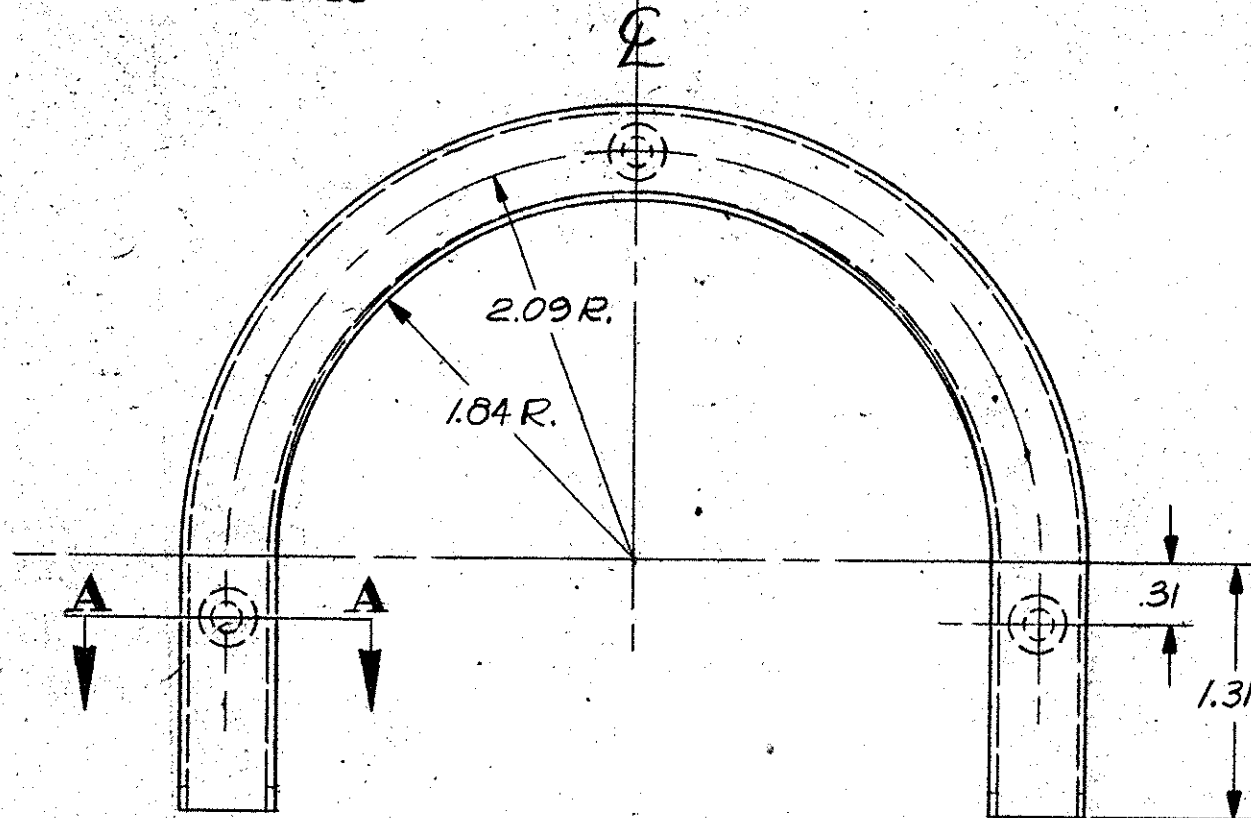
SBWS-6540A330-A

SBWS-6540A330-A



SECTION A-A  
FULL SCALE

SYMM. ABOUT



NOTES:

UNLESS OTHERWISE SPECIFIED—  
CHROME PLATE PER FORD SPEC. P40-L.

WELD STUDS TO BEZEL IN LOCATIONS  
SHOWN.


SAMPLE TO BE APPROVED BY ENGINEERING  
DEPT. BEFORE PRODUCTION.

ALL BURRS AND SHARP EDGES TO BE  
REMOVED.

LIMITS ON ALL FINISHED DIMENSIONS ± .010 UNLESS OTHERWISE SPECIFIED DO NOT SCALE


REL. FOR PRODUCTION		3-6-68	BJT
E.C. NO.	CHG. LET.	REVISIONS	
		DATE	BY CK.

CUSTOMER MODEL NO.	IONIA MODEL NO.
	963 COUGAR
SUPERSEDES REF.	SUPERSEDED BY
SBWS-654A330-A	
EXP. NO.	LAYOUT NO.

SMITH PLASTICS DIVISION  
  
**A.O. Smith Corporation**  
 IONIA, MICHIGAN  
 PRODUCT ENGINEERING

TITLE  
BEZEL ASSEMBLY-EXHAUST

MATERIAL .048 STEEL SAE 1008 OR 1010		PART NUMBER	
DRAWN	DATE	SCALE	
T. ZANDER	1-24-68	FULL	
CHECKED		ENGINEER	

SBWS-6540A330-A