

COUGARS UNLIMITED LLC Application Note

Installing a GM Turn Signal Switch in a 1967 Cougar

To install a GM turn signal switch in a 1967 Cougar, the following connections must be made:

SW Function	Cougar SW	Cougar Harness	GM SW
TS Power Feed	Blue or Lt Blue	Orange/Yellow	Purple
Right Rear	Orange/Blue	Orange/Black	Green
Left Rear	Green/Orange	Orange/Black	Yellow
Right Front	White/Blue	Purple	Dk Blue
Left Front	Green/White	White	Lt Blue
Brake	Green	N/C	White - see note 2
Emergency Feed	Red/white	Green/Red	Brown - see note 3
Emergency NOT	Red	Lt Blue	see note 4
Horn Feed	Yellow	Yellow	see note 5
Horn Output	Blue/Yellow	Blue/Yellow	see note 5

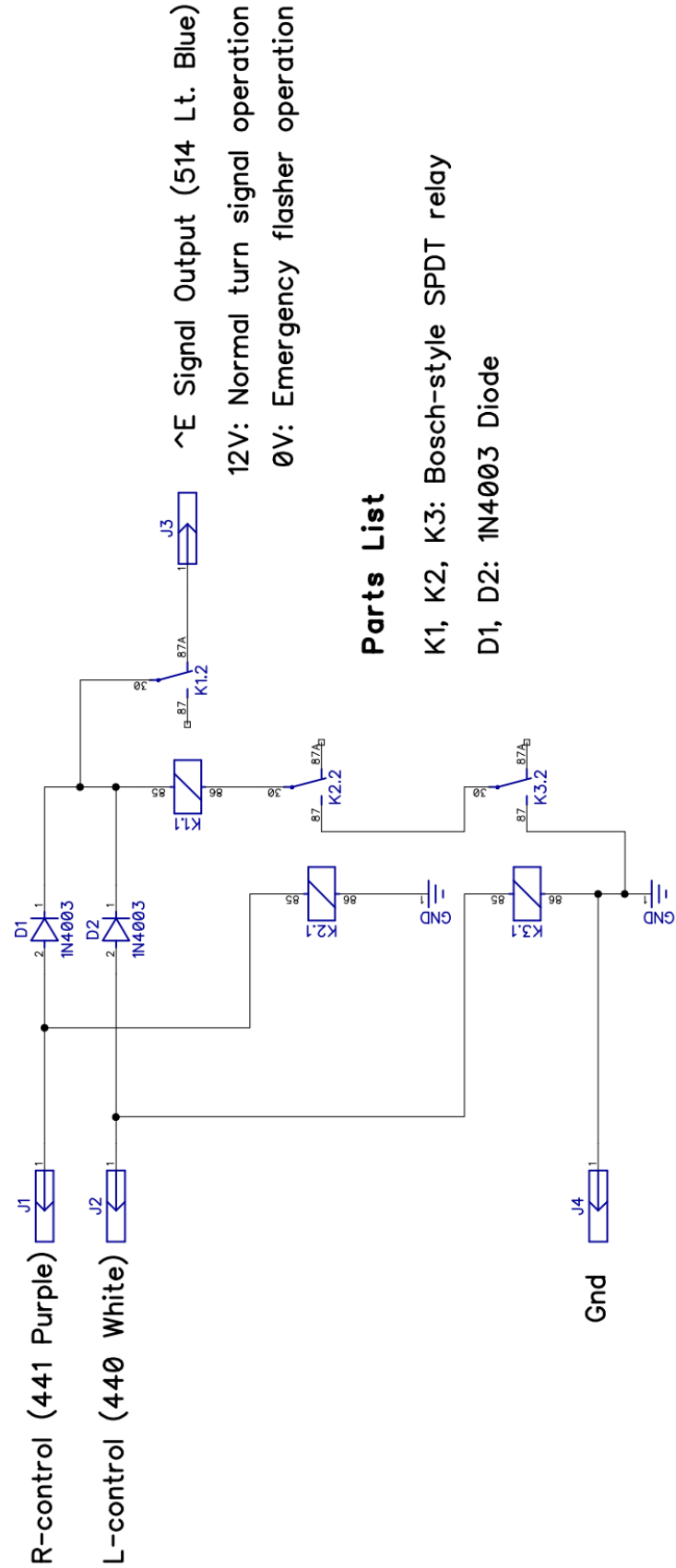
Note: On a 1967 Cougar:

1. Orange/Blue and Green/Orange are tied together to Orange/Black in the Cougar main harness.
2. Brake switch output is tied directly to 14ga Green running to trunk on Cougars, bypassing the turn signal switch. No connection (N/C) is made to GM White wire.
3. Tie GM Brown (4-way feed) to Cougar brake circuit breaker, Green/Red.
4. Use White (440) and Purple (441) Cougar harness signals with 2-input NAND circuit (see below) to provide Emergency NOT signal to emergency relay in trunk and under dash relay to the Cougar harness Lt Blue wire (514). This circuit can be installed in either under the dash or in the trunk next to the sequential controller.
5. Since GM switches connect the horn input to ground, a horn relay must be used.
6. **It is highly recommended to use the "Plasma" LED bulbs** because the GM switch contacts are not designed to handle four 1157 bulbs. Using LED bulbs will reduce the current through the switch.

GM Turn Signal Wiring

White - Brake Feed
Green - Right rear turn signal and brake
Yellow - Left rear turn signal and brake
Purple - TS Feed
Brown - Emergency (4-way) Feed
Dk Blue - Right front turn signal and indicator
Lt Blue - Left front turn signal and indicator
Black - Ground for horn relay

1967 Cougar or Thunderbird Emergency Signal Generator



Parts List

- K1, K2, K3: Bosch-style SPDT relay
- D1, D2: 1N4003 Diode